

LIBRA



CHLORAKA

Chloraka Village is situated west of the Paphos district three kilometres from the town.

Lower Chloraka is considered one of the most sought-after areas of Paphos both for permanent living and short-term rentals.

The village is home for a great number of sea-front hotels, restaurants, bars and leisure activities.

It is built at an average altitude of about 70metres from the sea, offering magnificent views of the Mediterranean.

The village neighbours with the communities of Emba, Lemba and Kissonerga.

It is a destination with beautiful beaches and an intense blend between old and modern buildings and a brehtaking natural environment.



LIBRA

A gated community comprising of 11 2-storey houses, with both 2 and 3 bedroom options. The properties feature private swimming pools, adding a touch of luxury to the serene landscape.

The modern architectural approach blends the project seamlessly with the natural environment, creating spacious and efficient interior areas.

The location is exceptional, providing unobstructed views of Pafos and the Mediterranean Sea from every single house. The natural landscape engulfs the project offering privacy and tranquility, without compromising convenience as all amenities are just 2 minutes away.

Whether you seek an investment opportunity or your private residence, LIBRA is the ideal choice.























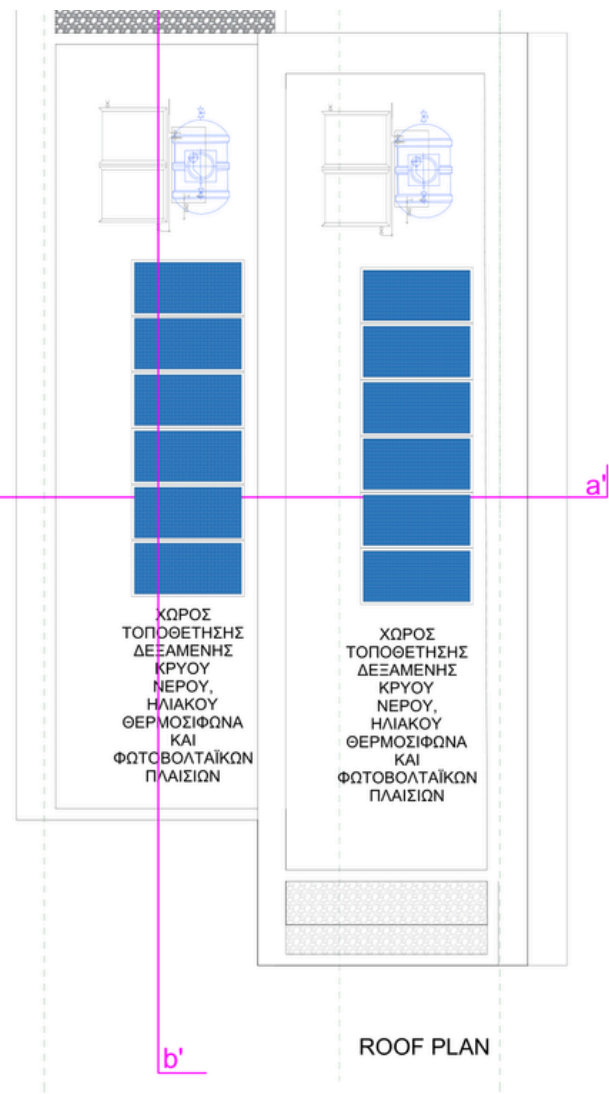
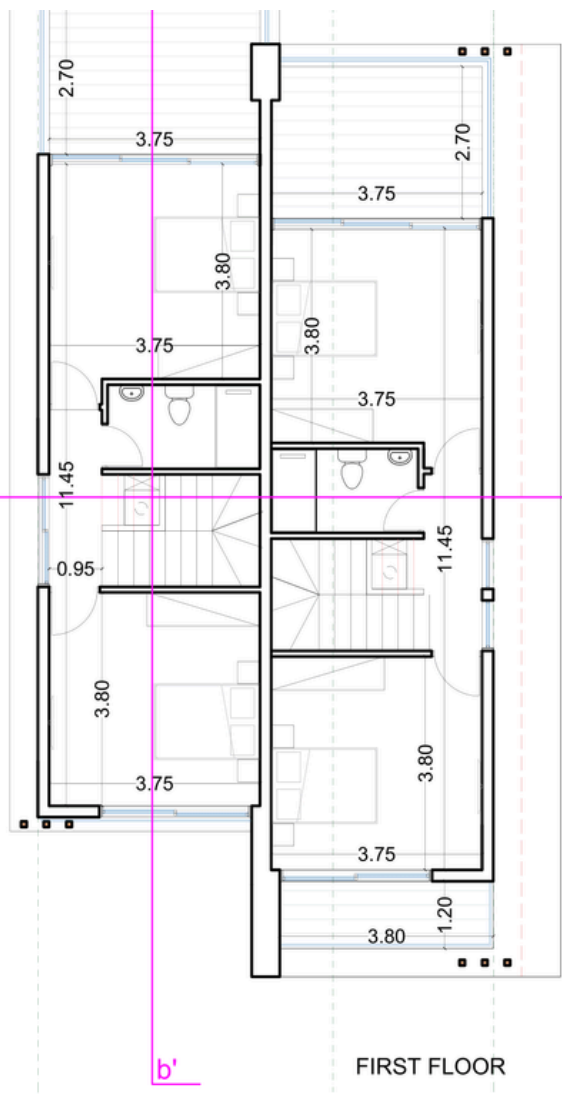
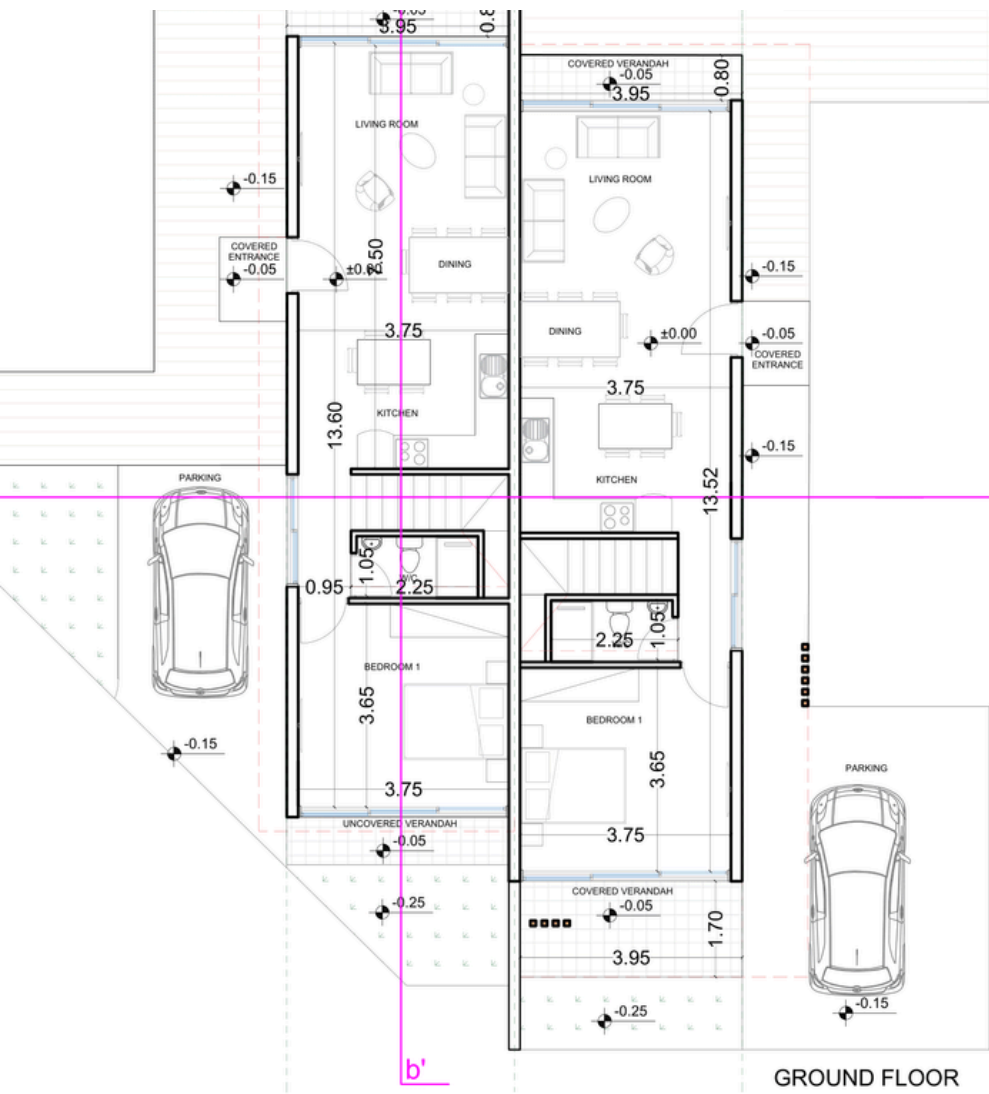


MASTER PLAN



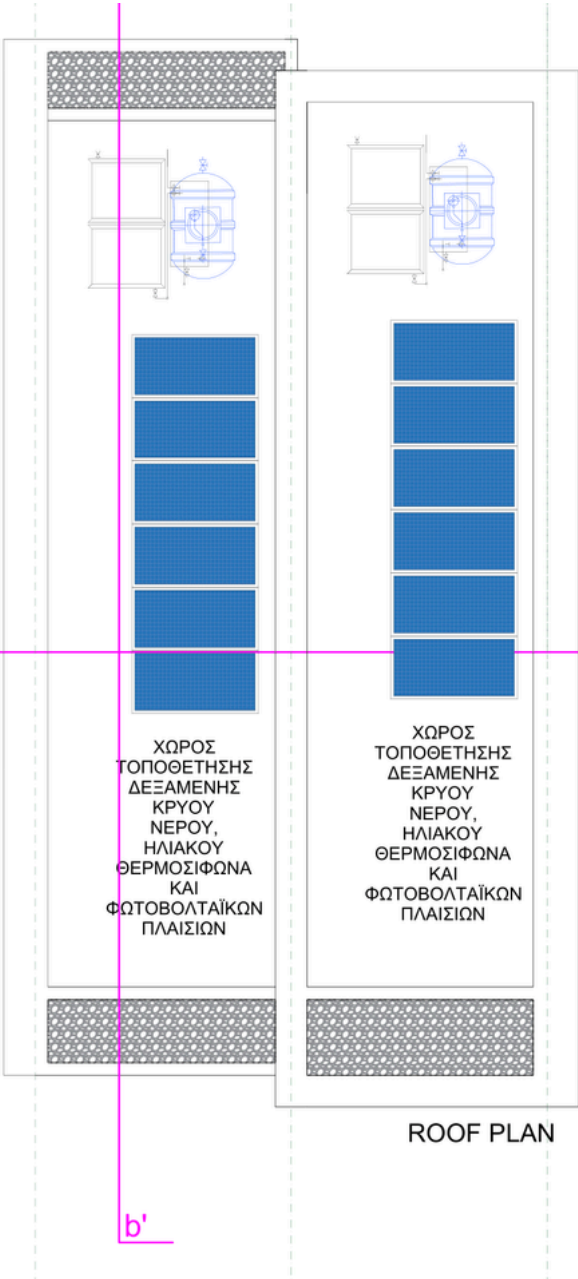
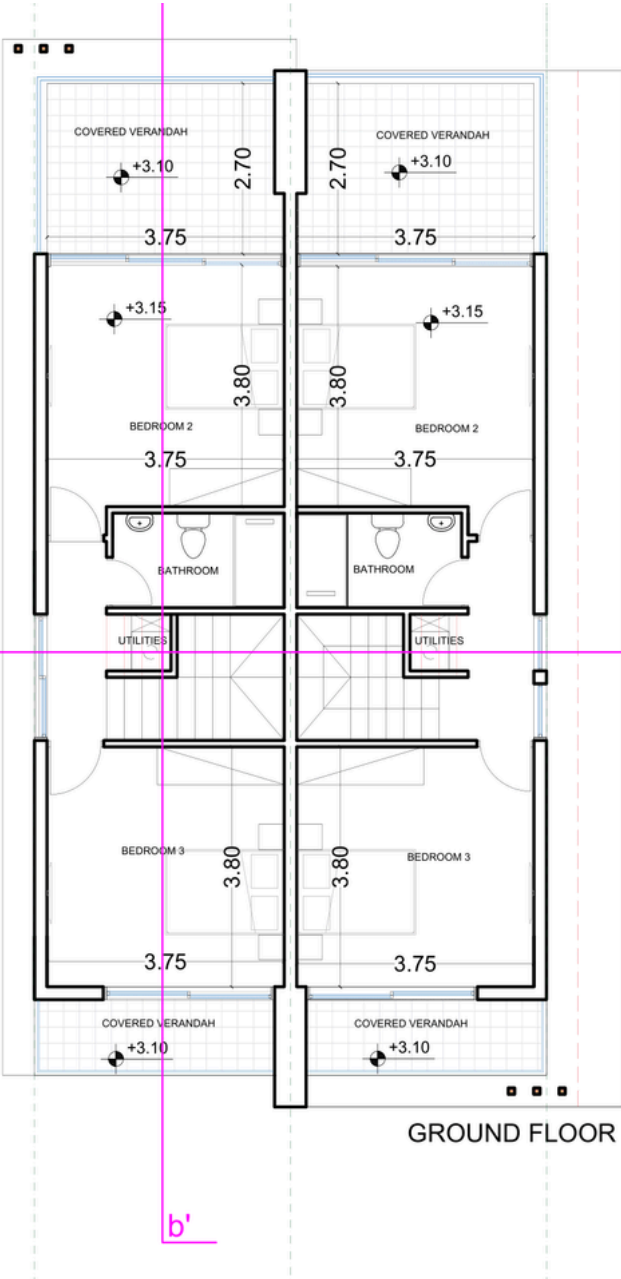
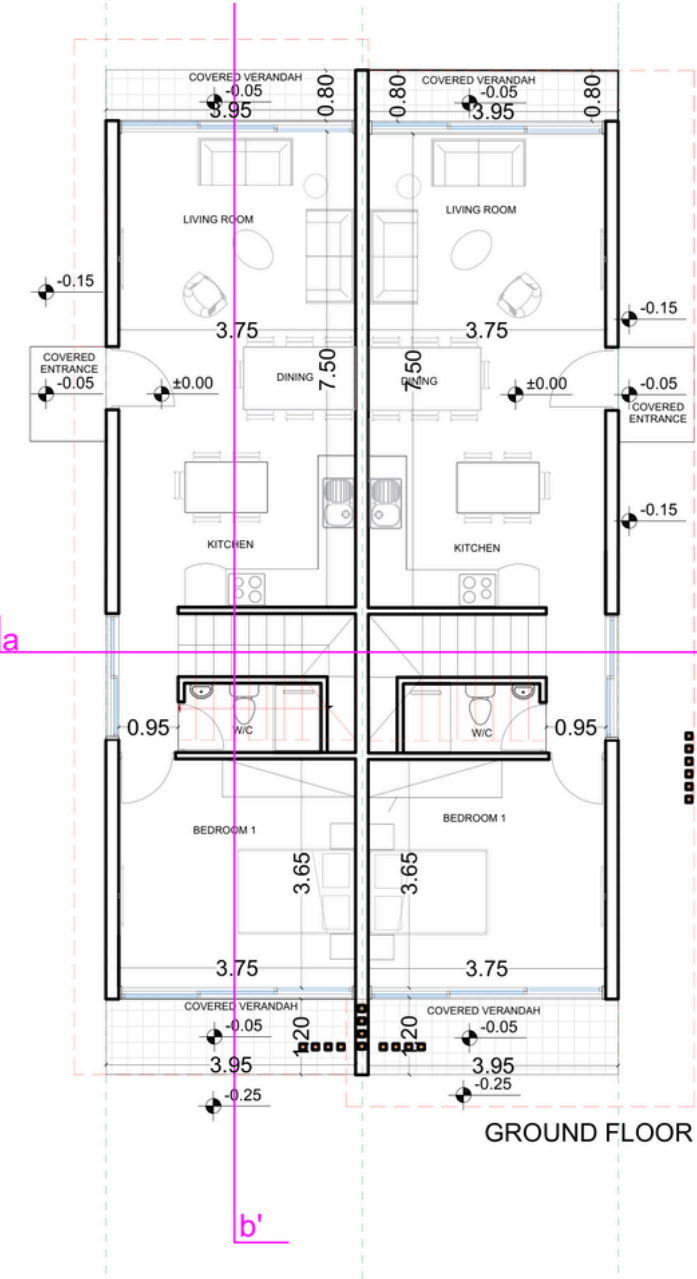
FLOOR PLANS

House1,2



FLOOR PLANS

House 3,4,5,6

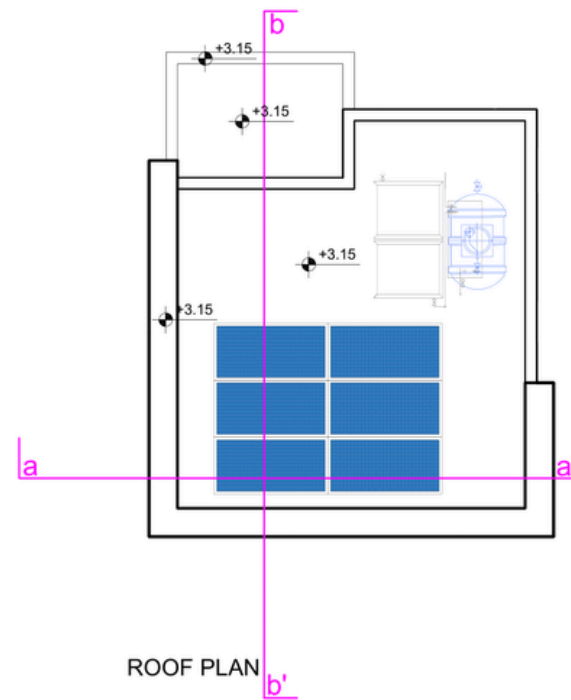
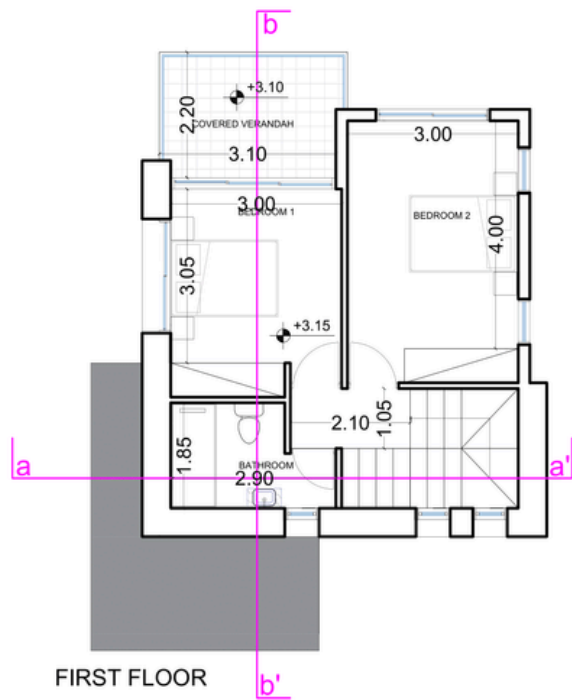
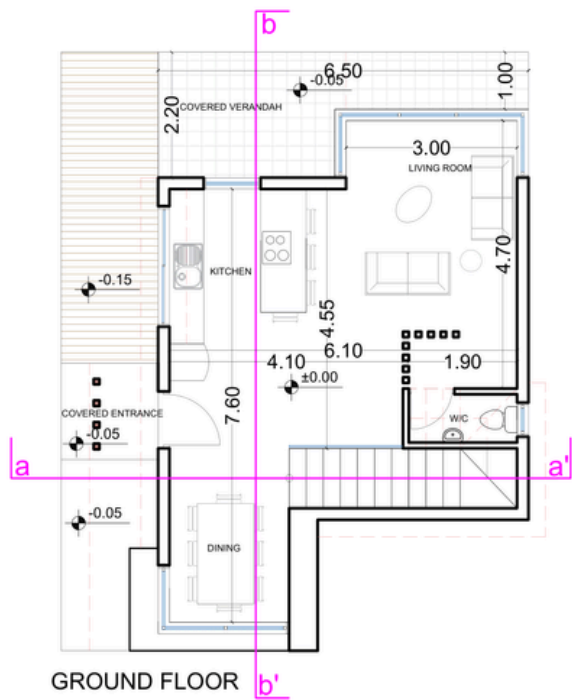


House 8,9,10,11



FLOOR PLANS

House 7





LOCATION



CITY CENTER 4KM



BEACH 1KM



AIRPORT 20KM



RESTAURANT 300M



SUPERMARKET 800M



SCHOOL 3KM



GOLF COURSE 15KM

LIBRA

SPECIFICATIONS

11 - 2 & 3 Bedroom Villas

- Gated community
- Private Swimming pool
- Electrical appliances and A/C split units included
- Front fence and entrance gate
- 5 KW solar system
- BBQ
- Intercom
- Alarm system
- Provision for electrical car charger
- Provision for central heating
- Energy Efficiency class "A"
- Upgraded thermal aluminium series
- Tailor made kitchen design
- Wide range of imported ceramic tiles and marbles
- Branded sanitary ware

